



PARTH VALVES AND HOSES LLP



- SS Corrugated Hose
- Non Return Valves
- Sampling Valve
- Safety Valve
- Sight Glass
- Y Strainer
- FDA Hose Pipe with End Fittings
- Ball Valve
- Diaphragm Valves
- Solenoid Valve
- Actuator
- Limit Switch Box
- Butterfly Valve

Mfg. Activity in FDA approved Hoses | Dairy Sanitary Valves & Fittings | Ball Valves | Diaphragm Valves | Diaphragm Operated Pumps | Butterfly Valves | Aluminium Butterfly Valves | Pharmaceutical Valves | Gate | Globe | Check Valves



ALUMINIUM BUTTERFLY VALVE

Size: DN 100 to DN 600

MATERIAL OF CONSTRUCTION IS AS FOLLOWS

Body- Aluminium

Disc- SS316/SS316L/ SS304/SS304L

Shaft- SS304

Seat- White EPDM/ Silicon/ Viton (Food Grade)

Drilling Std- BS 4504 - PN10

Pressure Rating- PN02/ PN03/ PN04

OPERATORS

- 1.Valves with Bare stem can be supplied
- 2.Valves up to size 24" can be supplied with Gear box for manual operation
- 3.All valves can be direct mounted with pneumatic or electrical actuators for complete automation options

STAINLESS STEEL BUTTERFLY VALVE

Size: DN 100, DN 150 and DN 200

MATERIAL OF CONSTRUCTION IS AS FOLLOWS

Body : SS316/SS316L / SS304/SS304L

Disc : SS316/SS316L / SS304/SS304L

Shaft : SS316/SS316L / SS304/SS304L

Seat : White EPDM / Silicon / Viton (Food Grade)

Drilling Std : BS 4504 - PN10

Pressure Rating : PN02/PN03/PN04

OPERATORS

- 1.Valves with Bare stem can be supplied
- 2.Valves can be supplied with Hand lever/Gear box for manual operation
- 3.All valves can be direct mounted with pneumatic or electrical actuators for complete automation options.



TC END BUTTERFLY VALVE

Size: DN 25 to DN 200

MATERIAL OF CONSTRUCTION IS AS FOLLOWS

Body : SS316/SS316L/ SS304/SS304L

Disc : SS316/SS316L/ SS304/SS304L

Shaft : SS316/SS316L/ SS304/SS304L

Seat : White EPDM / Silicon / Viton (Food Grade)

End connection : TC End

Pressure Rating : PN04

OPERATORS

- 1.Valves with Bare stem can be supplied
- 2.All valves can be direct mounted with pneumatic or electrical actuators for complete automation options.



WAFER / LUG BUTTERFLY VALVE

Size: DN 40 to DN 600

MATERIAL OF CONSTRUCTION IS AS FOLLOWS

Body : CI/DI/CS(WCB)

Disc : CF8M/CF8/DI/CS(WCB)

Stem : SS 410

Seat : EPDM / SILICON / VITON

Flange Drilling : ANSI B 16.5 #150

Pressure Rating : PN06 / PN10 / PN16

OPERATORS

- 1.Valves up to size 6" can be supplied with hand lever for manual operation
- 2.Valves up to size 24" can be supplied with Gear box for manual operation
- 3.All valves can be direct mounted with pneumatic or electrical actuators for complete automation options.

FLANGED END BALL VALVE

Type: Two/Three Piece Design

End Connection: Flanged End

Bore: Full Bore/Reduced Bore

Size: For Two Piece Design- DN 15 to DN 80

For Three Piece Design- DN 15 to DN 150

MATERIAL OF CONSTRUCTION IS AS FOLLOWS

Body: CF8M/CF8/CS (WCB)

Ball: CF8/CF8M

Stem: SS304/ SS316

Seat: PTFE

Pressure Rating: #150

OPERATOR

- 1.Valves can be supplied with Hand-lever for manual operation
- 2.All valves can be mounted (with Bracket and coupler) with pneumatic or electrical actuators for complete automation options.



SCREWED END BALL VALVE

Type: One/Three Piece Design

Bore: Full Bore/Reduced Bore

Size: For One Piece Design -DN 08 to DN 50

For Three Piece Design- DN 15 to DN 100

MATERIAL OF CONSTRUCTION IS AS FOLLOWS

Body: CF8M/CF8/CS (WCB)

Ball: CF8M/ CF8

Stem: SS304/ SS316

Seat: PTFE

Pressure Rating: #150

OPERATOR

- 1.Valves can be supplied with Hand-lever for manual operation
- 2.All valves can be mounted (with Bracket and coupler) with pneumatic or electrical actuators for complete automation options.





TC END BALL VALVE

Type: Three Piece Design
Bore: Full Bore/Reduced Bore
Size: DN 15 to DN 100

MATERIAL OF CONSTRUCTION IS AS FOLLOWS

Body: CF8M/CF8/CS(WCB)
Ball: CF8M/ CF8
Stem: SS304/ SS316
Seat: PTFE
Pressure Rating: #PN10

OPERATOR

- 1.Valves can be supplied with Hand-lever for manual operation
- 2.All valves can be mounted (with Bracket and coupler) with pneumatic or electrical actuators for complete automation options.

3 WAY- L PORT BALL VALVE

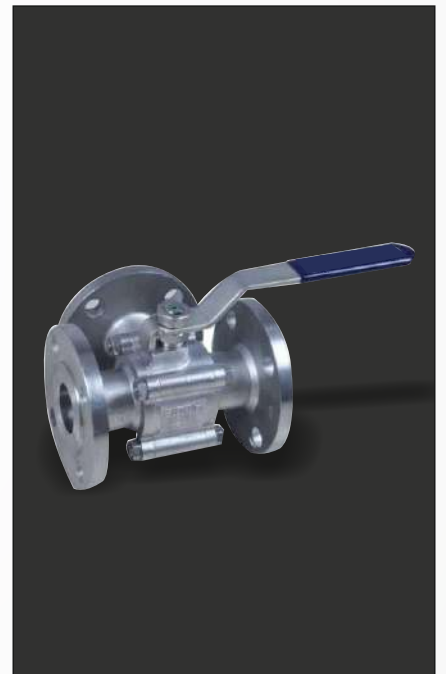
Bore : Reduced Bore
End Connection : Flanged End ANSI B 16.5 #150
Size : DN 25 to DN 100

MATERIAL OF CONSTRUCTION IS AS FOLLOWS

Body : CF8M/CF8/CS(WCB)
Ball : CF8M/ CF8
Stem : SS304/ SS316
Seat : PTFE
Pressure Rating : #150

OPERATOR

- 1.Valves can be supplied with Hand-lever for manual operation
- 2.All valves can be mounted (with Bracket and coupler) with pneumatic or electrical actuators for complete automation options.



FLUSH BOTTOM VALVE (PISTON TYPE)

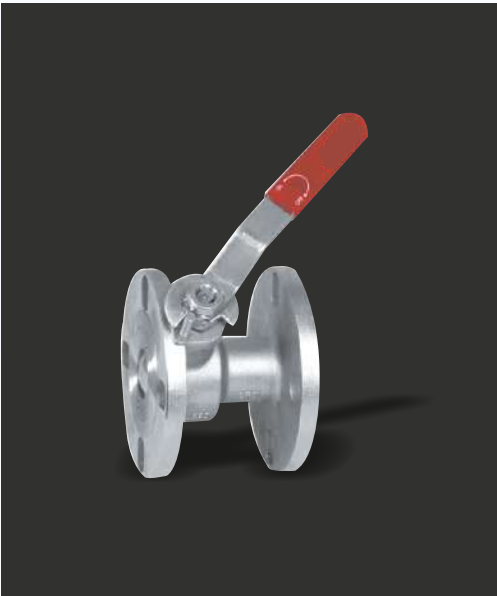
Bore : Full Bore
End Connection : Flanged End ANSI B 16.5 #150, Customized can supply
Size : DN 50 to DN 150

MATERIAL OF CONSTRUCTION IS AS FOLLOWS

Body : CF8M/CF8
Piston : CF8M/ CF8, (PTFE Coated)
Stem : SS304/ SS316
Seat : PTFE/Viton
Pressure Rating : PN04

OPERATOR

- 1.Valves can be supplied with Hand-wheel for manual operation
- 2.Valves can be supplied with pneumatic automation



FLUSH BOTTOM VALVE (BALL TYPE)

Bore : Reduced Bore
End Connection : Flanged End ANSI B 16.5 #150
Size : DN 40 to DN 150

MATERIAL OF CONSTRUCTION IS AS FOLLOWS

Body : CF8M/CF8/CS(WCB)
Ball : CF8M/ CF8
Stem : SS304/ SS316
Seat : PTFE
Pressure Rating : #150

OPERATOR

Valves can be supplied with Hand-lever for manual operation

CHECK VALVE / NON RETURN VALVE (NRV)

Type : Inline Check Valve.
Size : End Connectionwise Size Range.

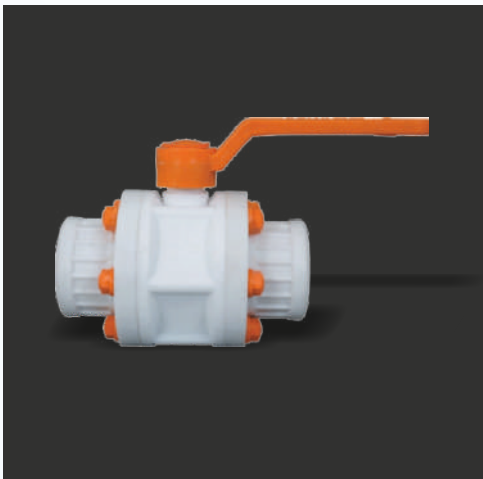
1. End Connection: Screwed End BSP (Concentric Type)
Size: 1/4" TO 1.5"
2. End Connection: Non-Slam type (Concentric Type)
Size: 1/2" TO 6"
3. End Connection: Wafer type (Concentric Type)
Size: 1 1/2" TO 24"
4. End Connection: OD Base Weld end (Concentric or Eccentric Type)
Size: 1/2" TO 1"

MATERIAL OF CONSTRUCTION IS AS FOLLOWS

Body : SS316/SS316L/SS304
Check Plate : SS316/SS316L/SS304
Seat : PTFE/EPDM/VITON
Spring- Spring Steel (Electroplated)

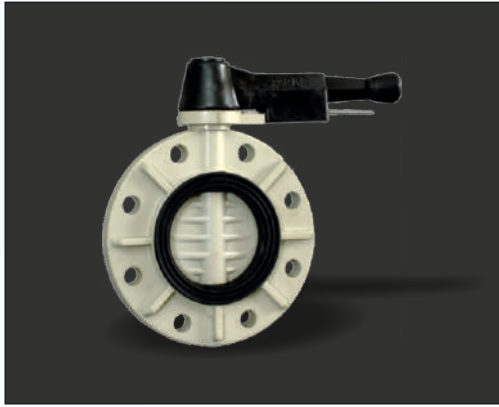
PRESSURE RANGE

PN02 / PN04/ PN10 / PN16



PP BALL VALVE

Construction: 3 Piece Design, Full Bore
End Connection: Flanged End ANSI B 16.5 #150 / Screwed End
Body/Adapter: PP/HDPE/ISOPP/PVDF
Ball: PP/HDPE/ISOPP/PVDF
Stem: MS/SS PP Coated
Seat: PTFE
Pressure Rating: PN06
Operators: Hand lever
Size Range: For Flanged End 1/2" to 12"
For Screwed End 1/2" to 4"



PP BUTTERFLY VALVE

Construction: Single Piece Design
End Connection: Flanged End as per ANSI B 16.5 #150
Body: PP/ISOPP/PVDF
Disc: PP/ISOPP/PVDF
Seat: Neoprene/EPDM/Viton
Stem: EN8 /SS 316
Pressure Rating: PN06
Operators: Hand lever / Gearbox /Automation
Size Range: 2" to 10"

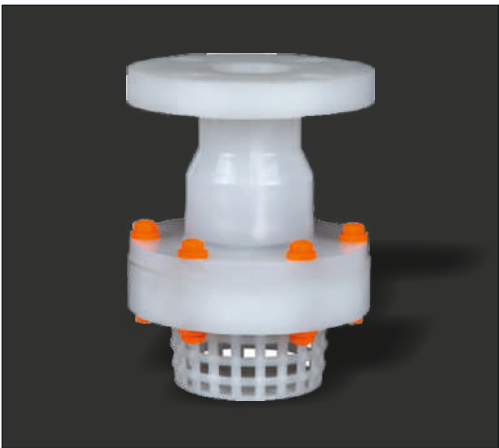
PP DIAPHRAGM VALVE

Construction : Weir Type Design, Soft Seated, Rising Stem
End Connection : Flanged End as per ANSI B 16.5 #150/ Screwed End
Body : PP/ISOPP/PVDF
Bonnet : PP/ISOPP/PVDF
Diaphragm : Neoprene/ Teflon Coated
Compressor : Glass Filled PP
Stem : EN8 /SS 316
Pressure Rating : PN06
Handwheel : PP
Size Range : For Flanged End 1/2" to 4"
For Screwed End 1/2" to 1"



PP FOOT VALVE

Construction : Ball Type Design, Soft Seated
End Connection : Flanged End as per ANSI B 16.5 #150/ Screwed End
Top Body : PP/ISOPP/PVDF
Bottom Body : PP/ISOPP/PVDF
Screen : PP/ISOPP
Ball- MS/SS : PP/ISOPP/PVDF coated
Ball Ring : PP/ISOPP/PVDF
Pressure Rating : PN06
Size Range : For Flanged End 1" to 8"
For Screwed End 1" to 4"



PP NON RETURN VALVE

Construction : Ball Type Design, Soft Seated
End Connection : Flanged End as per ANSI B 16.5 #150/ Screwed End
Top Body : PP/ISOPP/PVDF
Bottom Body : PP/ISOPP/PVDF
Screen : PP/ISOPP
Ball- MS/SS : PP/ISOPP/PVDF coated
Ball Ring : PP/ISOPP/PVDF
Pressure Rating : PN06
Size Range : For Flanged End 1" to 8"
For Screwed End 1" to 4"





SAFETY VALVE

Type : Spring Loaded Angle type.

Size : End Connectionwise Size Range.

1. End Connection: Screwed End BSP, Size: 1/4" TO 1"
2. End Connection: Tri-clover End, Size: 1/4" TO 1"
3. End Connection: Flange End, Size: 1/2" to 2"
4. End Connection: OD Base Weld End, Size: 1/2" to 4"

MATERIAL OF CONSTRUCTION IS AS FOLLOWS

Body : SS316 / SS316L / SS304

Disc : SS316 / SS316L / SS304

Shaft / Stem : SS316 / SS304

Seat : EPDM / Silicon / Viton (All Food Grade)

Spring : Spring Steel (Electroplated)

Stem Seal : EPDM / Silicon / Viton (All Food Grade)

SUITABLE FOR APPLICATION :

Air/Steam/Liquid

SET PRESSURE RANGE :

0.5 TO 8 Bar

INLINE SIGHT GLASS

MATERIAL

In contact with product : 316L (optional) 304/304L

Not in contact with product : 304/304L

Glass Cylinder : Borosilicate/Sodium Silicate

Gasket : PTFE/NBR/EPDM/SILICON

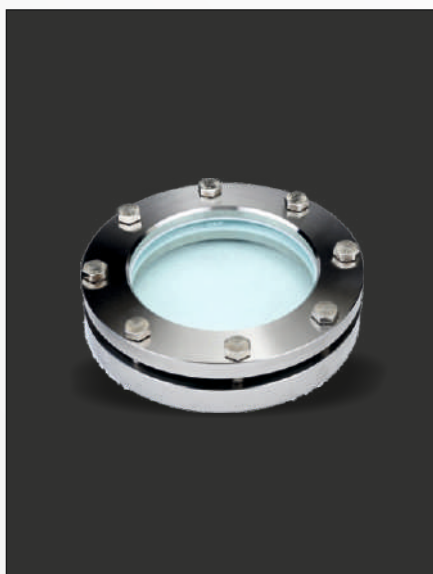
TECHNICAL SPECIFICATION

Temperature Range : 10°C to +140°C Max

(Pressure : 4 bar)

CONNECTIONS

1. Weld OD ASME BPE
2. Clamp DIN 32676/BS 4825 (Tri-clover end)
3. Weld DIN 11850
4. Male DIN 11851



DOUBLE FLANGE SIGHT GLASS

MATERIAL

Base flange : 316L (optional) 304/304L

Cover flange : 304/304L

Glass Disc : Borosilicate / Sodium Silicate

Gasket : PTFE / EPDM / SILICON

TECHNICAL SPECIFICATION

Temperature Range : -10°C to +140°C

Max Pressure : 10 bar

Min Pressure : Full vacuum

OPTION

1. Light fitting if needed is available.
2. Wiper assembly if needed is available.

DOUBLE WINDOW SIGHT GLASS

MATERIAL

Body : CF8/CF8M/CF3/CF3M

Cover flange : CF8/CF8M/CF3/CF3M

Glass Disc : Borosilicate / Sodium Silicate

Gasket : PTFE / EPDM / Silicon

TECHNICAL SPECIFICATION

Temperature Range : -10°C to +140°C

Pressure Rating : 06 bar, 10 bar, 16 bar

Face to face dimension. : EN 558-1 & ASME B16.10

Flange drilling : ASME B 16.5, ANSI #150,

Testing standard : API 598



TUDER MAKE TUFOOD FAT

Size : 1/2 " TO 4"

Working Temperature Range : -25°C / +80°C

Working Pressure : 10 BAR

Application : Suction and delivery hose suitable for fatty and Non fatty food products.



TUDER MAKE TUFOOD EPDM

Size : 1/2 " TO 4"

Working Temperature Range : -40°C / +120°C

Working Pressure : 10 BAR

Application : Suction and delivery hose suitable for a wide range of food products.



TUDER MAKE TUBLUESTREAM

Size : 3/8 " TO 3"

Working Temperature Range : -40°C / +164°C

Working Pressure : 10 BAR

Application : Delivery hose suitable for a wide range of Non fatty food products.



TUDER MAKE TUSIL BRIGHT

Size : 1/2 " TO 4"

Working Temperature Range : -60°C / +200°C

Working Pressure : 3 TO 15 BAR (Depending upon Size).

Application : Suction and delivery hose suitable for cosmetic, pharmaceutical and food products.





TUDER MAKE MILKFLEX PLUS

Size : 1" TO 4"
Working Temperature Range : -40°C / +80°C
Working Pressure : 9 TO 10 BAR (Depending upon Size).
Application : Light and flexible lorry collecting hose suitable for milk and milk by Products.

TUDER MAKE TUALCOMASTER

Size : 3/4" TO 4"
Working Temperature Range : -35°C / +100°C
Working Pressure : 6 BAR
Application : Suction & delivery hose suitable for alcohol concentration upto 99%.



TUDER MAKE TUCHEM UPE

Size : 1/2" TO 4"
Working Temperature Range: -35°C / +100°C
Working Pressure : 16 BAR
Application : Suction and delivery hose designed according to EN 12115 standards for chemical products.

TUDER MAKE TUFLUOR PTFE CHEM

Size : 1/2" TO 4"
Working Temperature Range: -40°C / +150°C
Working Pressure: 12 TO 16 BAR (Depending upon Size).
Application : Suction and delivery hose designed according to EN 12115 standards for chemicals and solvents,



SS/PTFE CORRUGATED HOSES / BELLOWS

Hose Size : 1/4" TO 8"
Bellows Size : 2" TO 14"
Working Temperature Range: 0°C / +350°C
Hose Working Pressure : 16 BAR
Bellows Working Pressure : 6 BAR
Application : Suction and delivery hose for chemical products and hot media



AIR OPERATED DOUBLE DIAPHRAGM PUMP

For Food,Pharma,Chemical Industry - liquid & powder application.

Types : Flooded,Submerged,Self Priming

1. PE/PTFE Pump
2. Sanitary Pump
3. Metal Pump
4. Pharmaceutical Pump
5. Aseptic Pumps EHEDG Certified
6. Powder Pumps
7. TC Intelligent Pumps

BARREL PUMP

For Food, Pharma, Chemical Industry

Types : Self Priming

- 1) Motorised Barrel Pump
- 2) Container Pump
- 3) Air pneumatic barrel Pump
- 4) Pharmaceutical Pump



NEEDLE VALVE

Type : Inline Needle Valve.

Size : Screwed End BSP: 1/8" TO 1"

MATERIAL OF CONSTRUCTION IS AS FOLLOWS

Body- SS316/SS304

Needle- SS316/SS304

Stem Seat- PTFE

OPERATOR

Manual Handlever

Pressure Range : 6000 PSI



SANITARY WEIR TYPE DIAPHRAGM VALVE

TECHNICAL REFERENCES OF CONSTRUCTION

Designing of valves confirms to : BS 5156 Euro BS EN 13397 (2002)

Face to Face Dimensions confirming to : BS EN 558-1 Series

Flanges Drilling Confirms to : ANSI B 16.5 Class 125 & 150

MATERIAL OF CONSTRUCTION IS AS FOLLOWS

Body : CF8 / CF8M / CF3M

Diaphragm : EPDM / NEOPRENE / SILICON/VITON / PTFE Backed EPDM

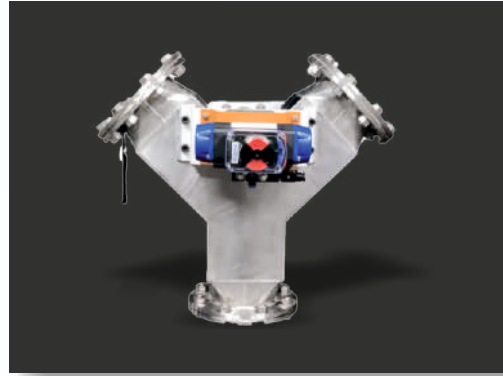
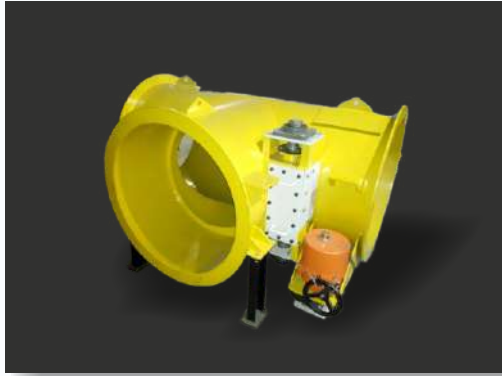
Handwheel : ABS Plastic / SS304

End Connections : Butt Weld / TC end / Screwed End / Flanged End

AUTOMATION

- 1.All valves can be supplied with pneumatic actuators for complete automation options.





DAMPER PRODUCT RANGE

- BUTTERFLY DAMPER
- HIGH PERFORMANCE BUTTERFLY DAMPER
- HIGH TEMPERATURE BUTTERFLY DAMPER
- MULTI-LOUVER DAMPER
- MULTI-VANE DAMPER
- GUILLOTINE DAMPER
- STACK DAMPER
- POPPET DAMPER
- SLIDE GATE
- RACK AND PINION SLIDE GATE
- KNIFE EDGE SLIDE GATE
- HOT GAS / AIR DIVERTER "T" TYPE
- HOT GAS / AIR DIVERTER "Y" TYPE
- MATERIAL DIVERTER "Y" TYPE
- MATERIAL DIVERTER THREE WAY
- DOUBLE FLAP DISCHARGE GATE
- SINGLE FLAP DISCHARGE GATE
- RIGHT ANGLE VALVE
- PAN DISCHARGE VALVE
- DOUBLE BEAT VALVE
- ROTARY AIR LOCK VALVE
- ROTARY FEEDER
- PLOG FOR DIVERTER
- GRAVITY OPERATED DAMPER (NRV)
- GRAVITY OPERATED ML DAMPER (NRV)
- TELESCOPIC DUCT
- TAILOR MADE FABRICATED EQUIPMENTS
- FABRICATED OFFSET BUTTERFLY VALVE FOR 100% SEALING EFFICIENCY

OUR CLIENTS

DAIRY INDUSTRIES					
					
PHARMA INDUSTRY					
					
OEM					
					
FOOD INDUSTRY					
					
OIL INDUSTRY					
					
CHEMICAL & PAINT INDUSTRY					
					
DAMPERS					



PARTH VALVES AND HOSES LLP

Corporate Office & Factory : Plot. No. D-1/21/3/1/3 Road, Near Nagmani Hotel,
Thermax Chowk, Midc Chinchwad, Akurdi, Pune-411019 Maharashtra (INDIA)
Mobile : +91 9881 236 139 | 7722 092 473 | 7722 076 899 | 8600 034 431 | 860 003 4426
Email : pramod@parthvalve.com | sales@parthvalve.com | marketing@parthvalve.com

www.parthvalve.com